

PARENTAL CONTROL IN F-SECURE SAFE AND TOTAL

DISCLAIMER

Everything contained in this document is for informational purposes only and provided as-is.

Inter Engineering and the people related to Inter Engineering do not accept any responsibility whatsoever for what you do with the information you obtain from this document.

By using this document, you agree that Inter Engineering and the people related to Inter Engineering do not have any responsibility whatsoever for any damage whatsoever caused by the use, misuse or inability to use this document or the information or data it contains.

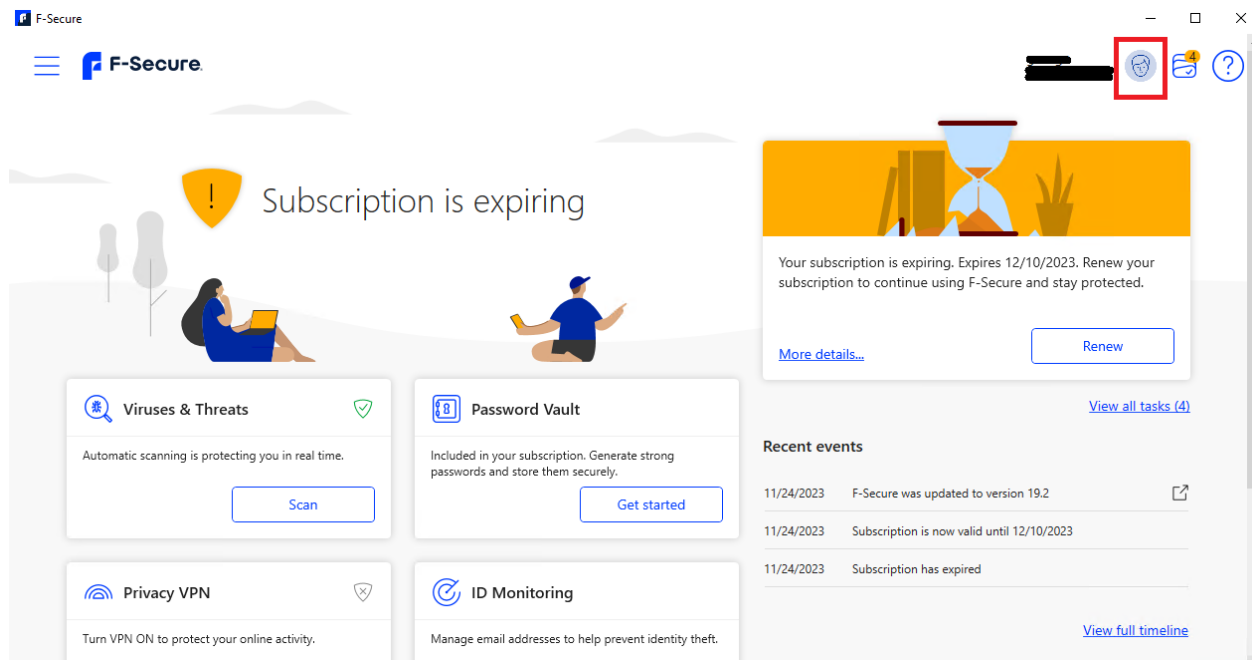
By using this document, you accept and agree with these terms.

If you do not agree with these terms then you should not use this document.

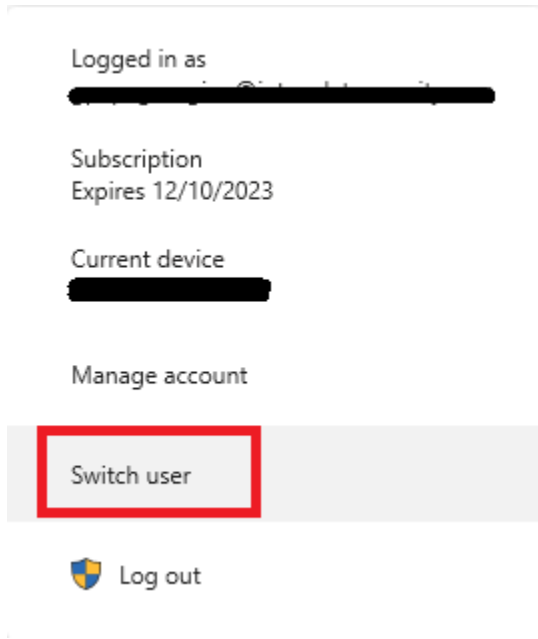
The information in this document is intellectual property and copyright © Inter Engineering. Nothing from this document may be republished or reproduced in any manner without the prior written consent of Inter Engineering

To Enable Parental Control for a Desktop that already has F-Secure SAFE installed:

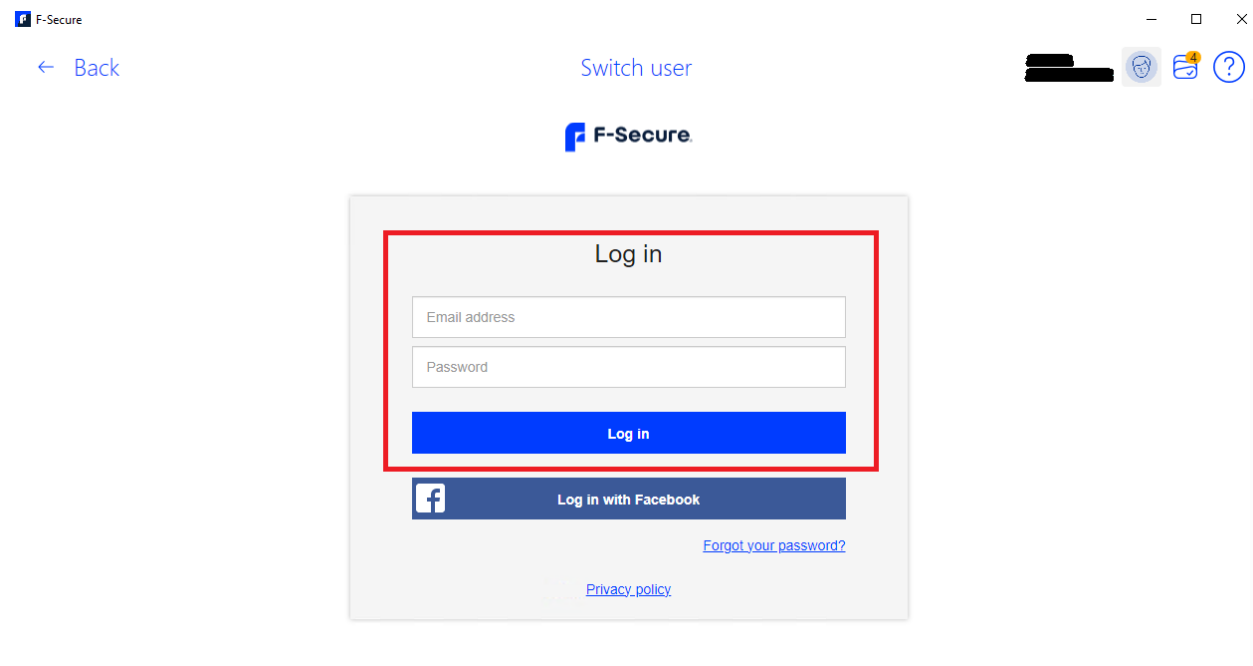
1. Open the F-Secure SAFE agent
2. In the mail menu top right click the user icon next to the user name



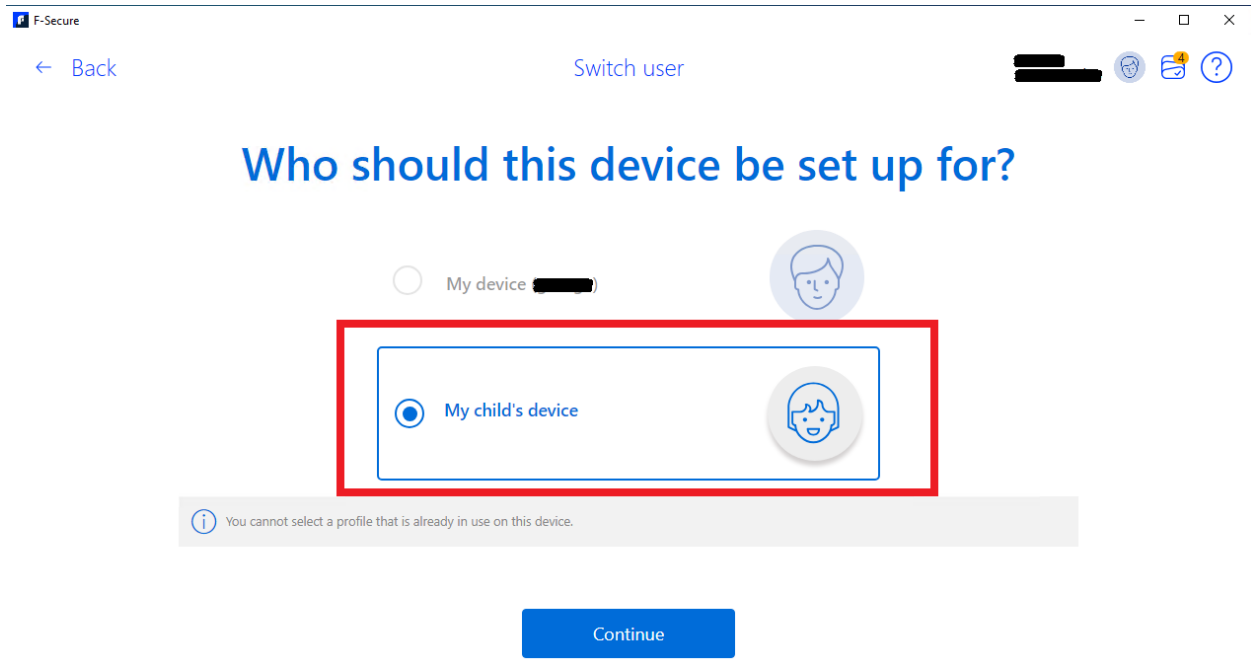
3. Select **Switch User**



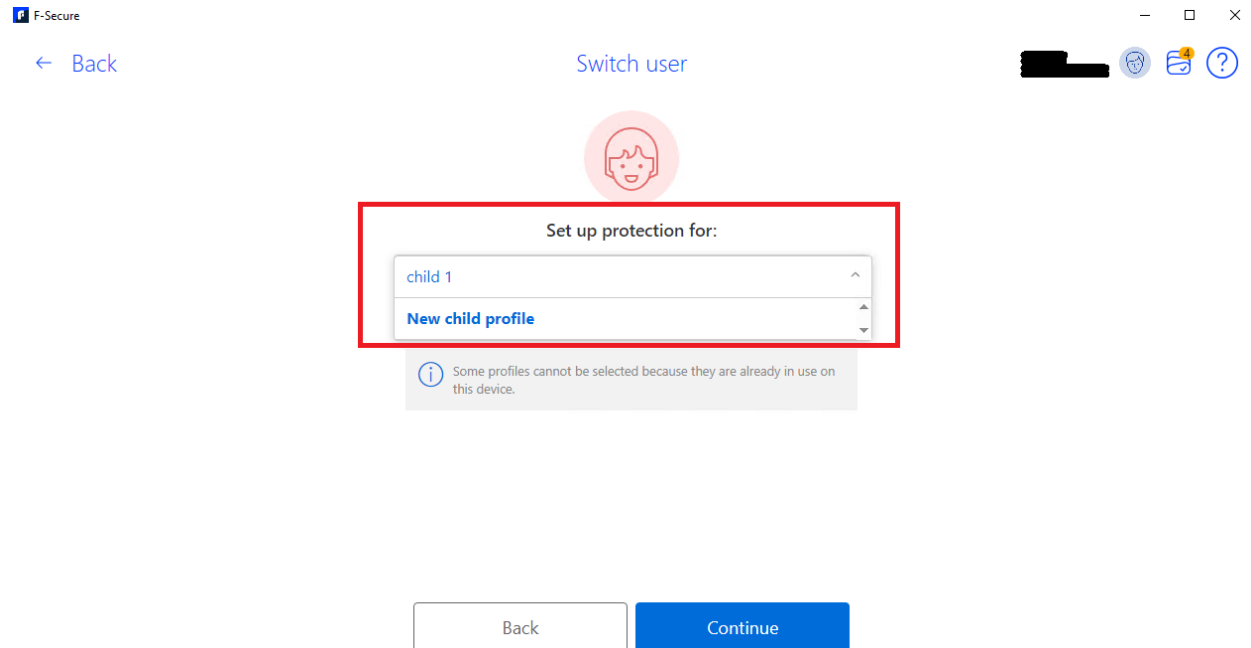
4. You will be asked to enter your my.f-secure.com account credentials and click **Log in**



5. Then select the option **My child's device** and click **Continue**



6. If you have already created child profiles you will see a dropdown menu listing these profiles and the option to create a **New child profile**.



- If no other child profiles have been created in the past, or you select to create a **New child profile** then you will be asked to create a Child profile. Enter a name for the child account and select the age group from the drop down list. Then click on next

F-Secure

← Back Switch user

Create new child profile

Name

Age group

Why create profiles for your children?

- Set up child profiles and manage their settings remotely.

Back Next

- Follow the onscreen instruction to configure the parental rules for the child profile you are creating. You may configure rules for Limit daily device use time, Limit device use during nighttime

F-Secure

← Back Switch user

child 1
Age group: 13-16 years

Daily Time Limits

Limit daily device use time.

Weekdays
Monday - Friday
Unlimited

Weekends
Saturday and Sunday
Unlimited

Back Next

← Back

Switch user



child 1
Age group: 13-16 years

Bedtime

Limit device use during nighttime.

School nights

Sunday - Thursday

☾ 22:00 - ☀ 07:00

18:00 00:00 06:00 12:00

Weekend nights

Friday and Saturday

☾ 22:00 - ☀ 07:00

Back

Next

← Back

Switch user



child 1
Age group: 13-16 years

Content Filtering

Select categories of web content you wish to block on all browsers.

Safe Search

Enable Safe Search to hide undesired content from search engines.

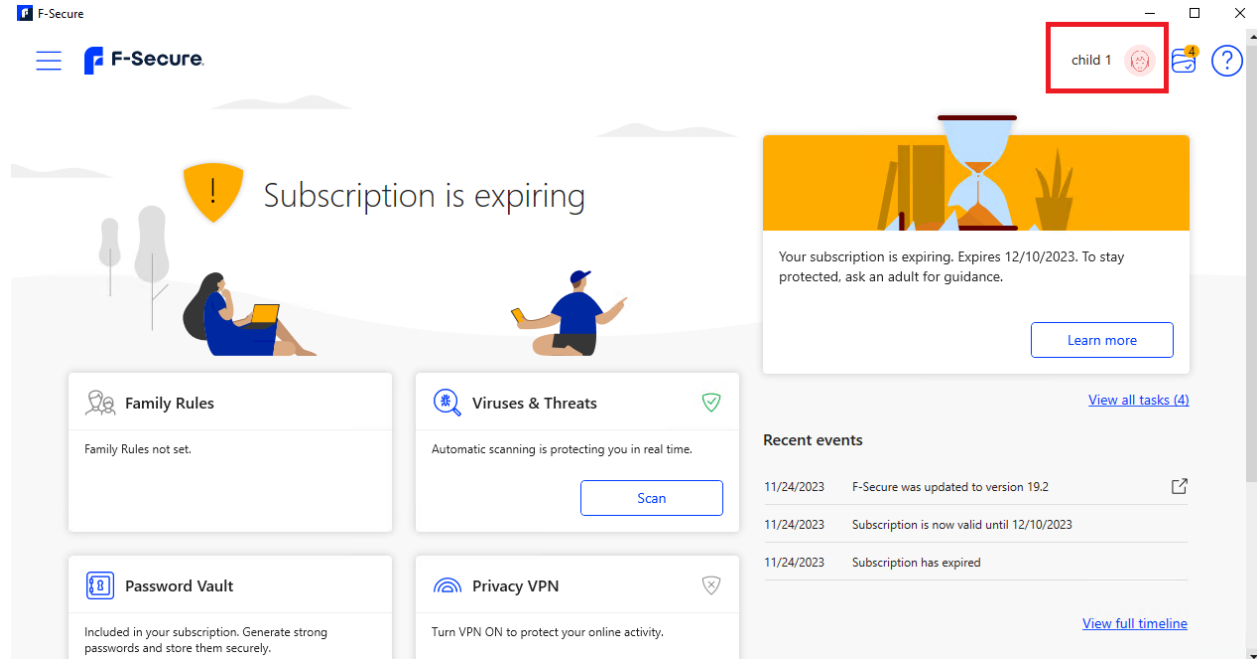
[More details](#)

- Adult content
- Disturbing
- Drugs
- Gambling
- Alcohol and tobacco
- Illegal
- Illegal downloads
- Violence
- Hate

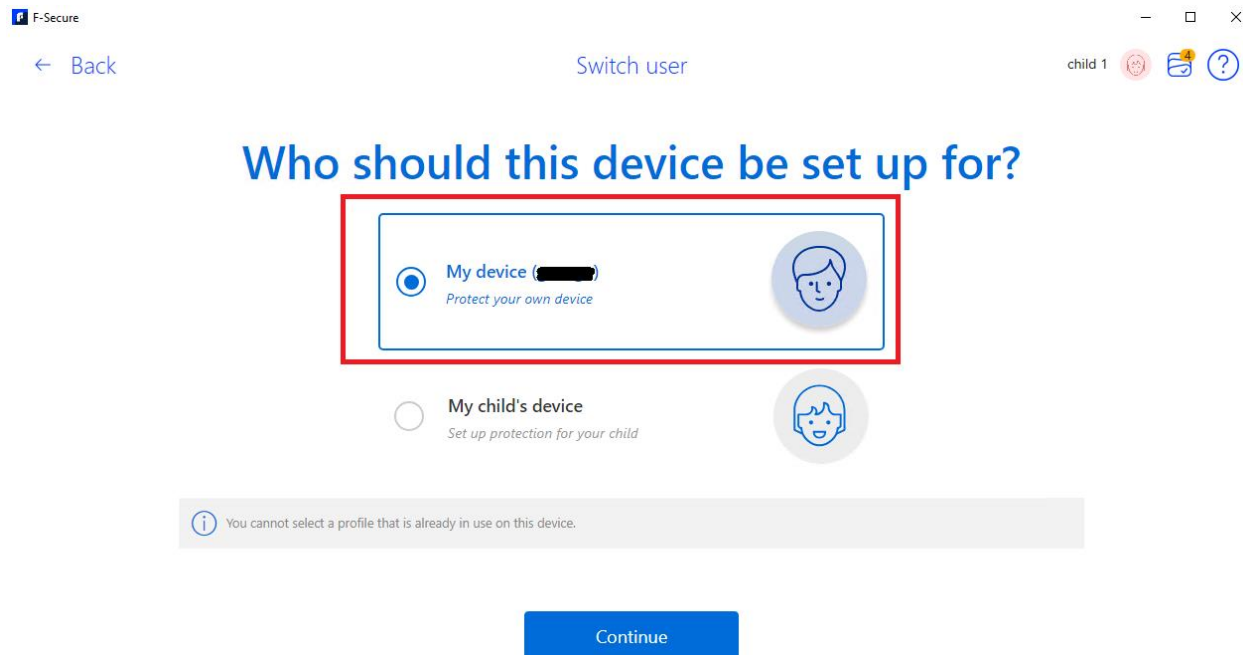
Back

Next

9. When finished with the rules configuration, you will see that in the main menu of the F-Secure SAFE the child profile is shown (child 1 in the example)



10. To change to a different profile (for example to another child or the admin profile) again click the user icon and select **switch user**
11. The my.F-Secure.com account credentials will be asked.
12. You may then select either your own profile or a child different child profile from the one you currently have.



You can edit the child profile Family rules form the my.F-Secure.com portal by clicking the child profile circle a second time